

## "GLORY" GLASS DESIGN



Glory 100  
Glory 125  
Glory 150



Glory-1



Glory-2



Glory-3



Glory-4



Glory-5



Glory-6

### ■ Use

- Exhaust air fan

### ■ Application:

- Residential premises
- Flats, cottages
- Offices
- Utility spaces
- Trade premises
- Restaurants
- Job sites
- Health care facilities
- Child care facilities

### ■ Options:

#### Timer

#### Timer

- Time delay range from 2 to 30 min

#### Humidity sensor

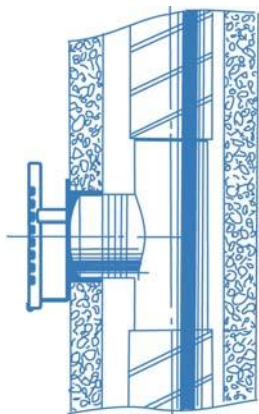
#### Humidity

- Humidity level range from 50 to 90%
- Time delay range from 2 to 30 min

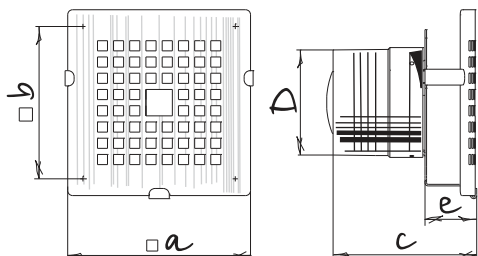
### ■ Features:

- Wall mounting
- Silent impeller
- Easy maintenance
- Long continuous work
- Ball bearing motor
- Glass front cover
- Built-in LED-Lamp (2 W)
- 5 years guarantee

Type	Timer	Humidity sensor
Glory 100		
100 T	●	
100 H		●
Glory 125		
Glory 150		

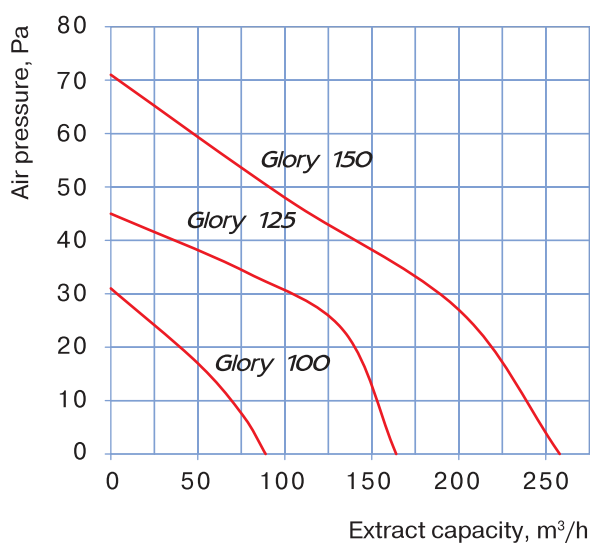


## Overall and mounting dimensions



Type	Dimensions, mm				
	a	b	c	D	e
Glory 100	180	120	143	100	49
Glory 100 T	183	122	151,6	98	65
Glory 100 H	183	122	151,6	98	65
Glory 125	204	140	152	125	55
Glory 150	230	165	169	150	53

## Specifications



Parameters	Glory 100	Glory 125	Glory 150
Voltage, V	220-240	220-240	220-240
Power, W	14	16	24
Current, A	0,085	0,1	0,13
Extract capacity, m <sup>3</sup> /h	89	164	258
Noise level, dBA 3m	33	34	37
r.p.m.	2300	2400	2400



## Packing

