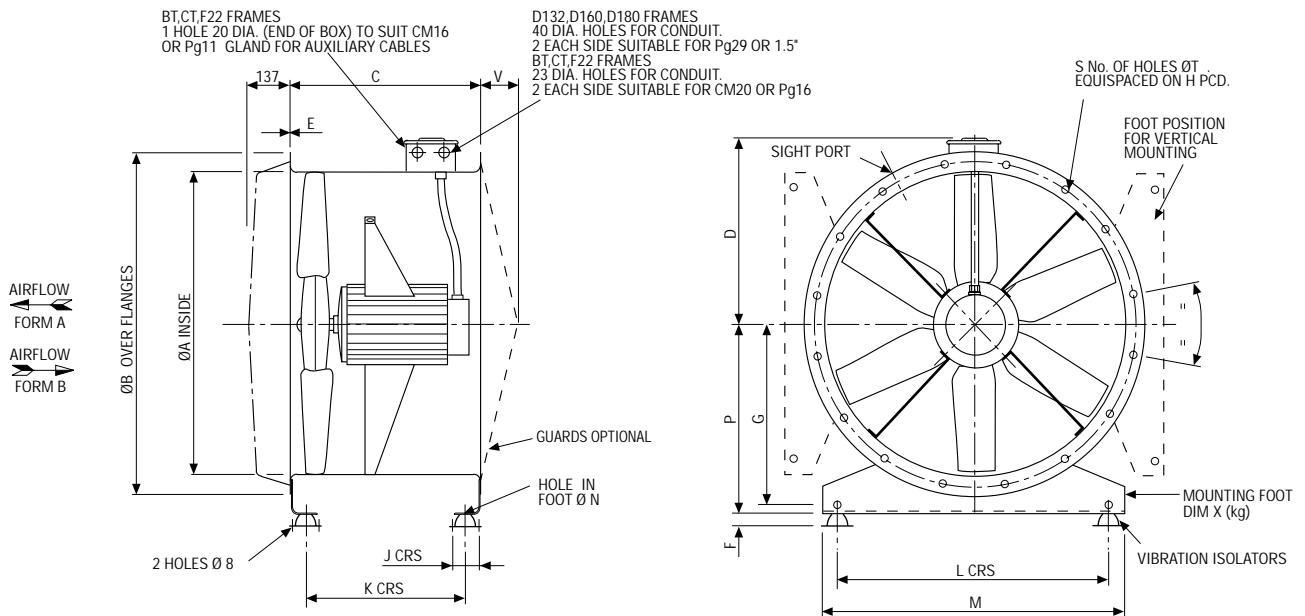


DIMENSIONS AND WEIGHTS

LONG CASED 315 - 1000 DIA - UP TO 315 HUB



Code	Motor Frame	DIMENSION REFERENCE (mm)																		Fan Weight (kg)
		A	B	C	D	E	F	G	H	J	K	L	M	N	P	S	T	V	X (kg)	
315	BT4/5/9	315	395	375	235	2.5	25	175	355	66	289	265	315	10	200	8	10	30	0.7	22
	CT5/9	315	395	375	235	2.5	25	175	355	66	289	265	315	10	200	8	10	30	0.7	27
355	BT4/5/9	355	435	375	256	2.5	25	200	395	66	289	305	355	10	225	8	10	30	0.9	24
	CT5/9	355	435	375	256	2.5	25	200	395	66	289	305	355	10	225	8	10	30	0.9	28
400	BT4/5/9	400	480	375	279	2.5	25	225	450	66	289	350	400	10	250	8	12	30	1.0	26
	CT5/9	400	480	375	279	2.5	25	225	450	66	289	350	400	10	250	8	12	30	1.0	30
450	BT4/5/9	450	530	375	306	2.5	25	255	500	66	289	400	450	10	280	8	12	30	1.2	28
	CT5/9	450	530	375	306	2.5	25	255	500	66	289	400	450	10	280	8	12	30	1.2	32
	F2225/45/65	450	530	520	306	3	25	255	500	66	434	400	450	10	280	8	12	30	1.2	44
	F2229/49/69	450	530	520	306	3	25	255	500	66	434	400	450	10	280	8	12	30	1.2	55
500	BT5/9	500	594	375	338	2.5	25	290	560	66	289	450	500	10	315	12	12	30	1.7	28
	CT5/9	500	594	375	338	2.5	25	290	560	66	289	450	500	10	315	12	12	30	1.7	34
	F2225/45/65	500	594	520	338	3	25	290	560	66	434	450	500	10	315	12	12	30	1.7	54
	F2229/49/69	500	594	520	338	3	25	290	560	66	434	450	500	10	315	12	12	30	1.7	65
560	BT5/9	560	654	375	368	2.5	25	330	620	66	289	510	560	10	355	12	12	50	2.0	34
	CT5/9	560	654	375	368	2.5	25	330	620	66	289	510	560	10	355	12	12	50	2.0	38
	F2225/45/65	560	654	520	368	3	25	330	620	66	434	510	560	10	355	12	12	50	2.0	56
	F2229/49/69	560	654	520	368	3	25	330	620	66	434	510	560	10	355	12	12	50	2.0	67
630	BT5/9	630	724	375	403	3	25	375	690	66	289	580	630	10	400	12	12	50	2.5	48
	CT5/9	630	724	375	403	3	25	375	690	66	289	580	630	10	400	12	12	50	2.5	52
	F2225/45/65	630	724	520	403	3	25	375	690	66	434	580	630	10	400	12	12	50	2.5	70
	F2225/49/69	630	724	520	403	3	25	375	690	66	434	580	630	10	400	12	12	50	2.5	81
	D132	630	724	520	440	3	25	375	690	66	434	580	630	12	400	12	12	50	4.8	117
D160	630	724	625	440	3	25	375	690	66	529	580	630	12	400	12	12	50	4.8	195	
710	CT5/9	710	804	375	443	3	25	415	770	66	259	660	710	10	440	16	12	50	4.5	54
	F2225/45/65	710	804	520	443	3	25	415	770	66	404	660	710	10	440	16	12	50	4.5	74
	F2229/49/69	710	804	520	443	3	25	415	770	66	404	660	710	10	440	16	12	50	4.5	85
	D132	710	804	520	480	4	25	415	770	66	402	660	710	12	440	16	12	50	5.3	139
	D160 *	710	804	625	480	5	45	415	770	124	505	660	710	10	440	16	12	50	5.3	205
	D180 *	710	804	711	480	6	45	415	770	124	589	660	710	16	450	16	12	50	7.4	280
800	CT5/9	800	894	375	488	3	25	485	860	66	259	750	800	10	510	16	12	50	7.0	63
	F2225/45/65	800	894	520	488	3	25	485	860	66	404	750	800	10	510	16	12	50	7.0	83
	F2229/49/69	800	894	520	488	3	25	485	860	66	404	750	800	10	510	16	12	50	7.0	94
	D132	800	894	520	525	5	45	485	860	124	400	750	800	12	510	16	12	50	7.0	163
	D160	800	894	625	525	5	45	485	860	124	499	750	800	12	510	16	12	50	7.0	220
	D180 *	800	894	711	525	6	45	485	860	124	589	750	800	12	510	16	12	50	8.5	300
900	F2225/45/65	900	1006	520	538	3	25	491	970	66	444	850	900	10	518	16	15	50	4.5	88
	F2229/49/69	900	1006	520	538	3	25	491	970	66	444	850	900	10	518	16	15	50	4.5	99
	D132	900	1006	520	575	5	45	491	970	124	444	850	900	12	518	16	15	50	5.3	183
	D160	900	1006	625	575	5	45	491	970	124	539	850	900	12	518	16	15	50	5.3	252
1000	F2225/45/65	1000	1106	520	588	3	25	547	1070	66	444	950	1000	10	574	16	15	50	5.3	96
	F2229/49/69	1000	1106	520	588	3	25	547	1070	66	444	950	1000	10	574	16	15	50	5.3	107
	D132	1000	1106	520	625	5	45	547	1070	124	444	950	1000	12	574	16	15	50	6.2	198
	D160	1000	1106	625	625	5	45	547	1070	124	539	950	1000	12	574	16	15	50	6.2	268
	D180 *	1000	1106	711	625	6	45	547	1070	124	629	950	1000	12	574	16	15	50	12.5	328

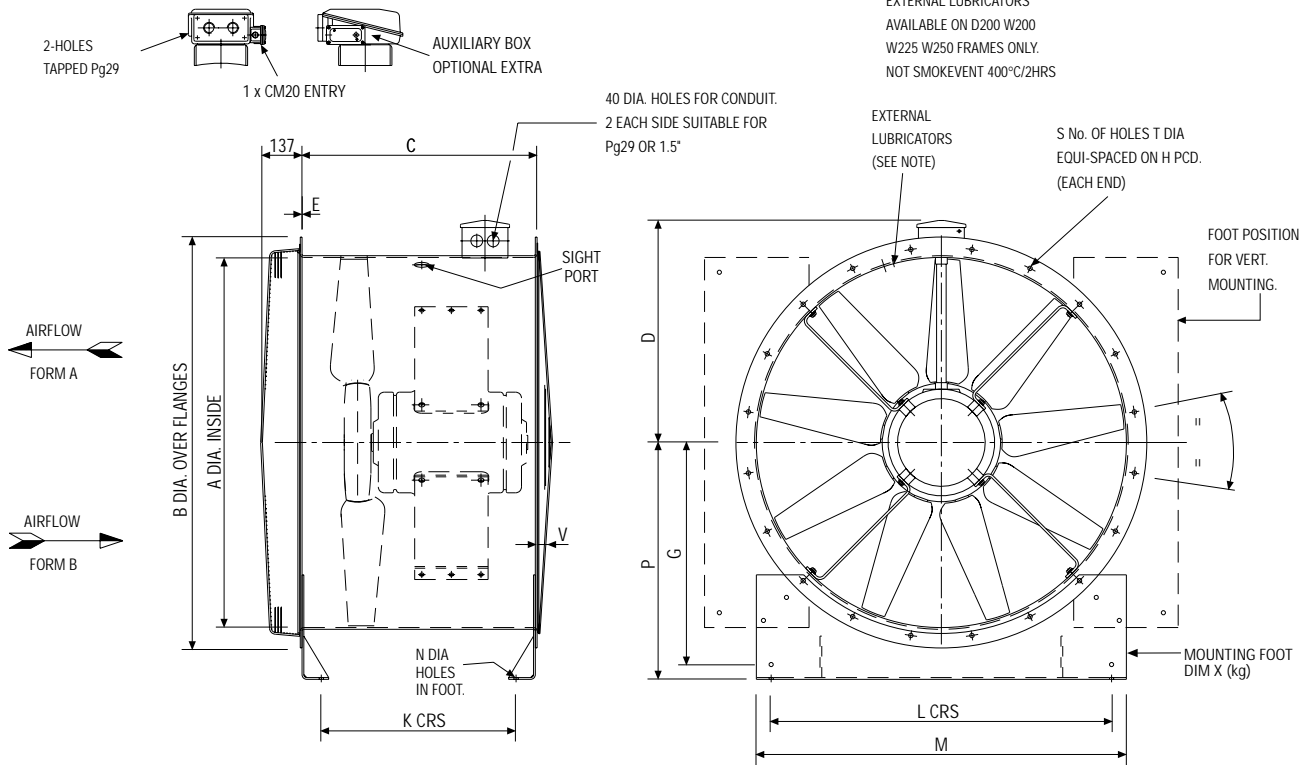
JM AEROFOIL



DIMENSIONS AND WEIGHTS

LONG CASED 1000-1600 DIA 400 & 500 HUB

T/BOX D200, W200, W225, W250 FRAMES



Code	Motor Frame	DIMENSION REFERENCE (mm)															Fan Weight (kg) 400 Hub	Fan Weight (kg) 500 Hub	
		A	B	C	D	E	G	H	K	L	M	N	P	S	T	V			X (kg)
1000	DF132/M/MA/MS/MK/MSA/MSB	1000	1106	610	629	5	547	1070	530	950	1000	16	574	16	15	50	12.5	230	
1000	D132/18 - 26	1000	1106	610	629	5	547	1070	530	950	1000	16	574	16	15	50	12.5	200	
1000	W132/M	1000	1106	610	629	5	547	1070	530	950	1000	16	574	16	15	50	12.5	199	
1000	DF160/MA/MB/L/LM	1000	1106	750	630	6	547	1070	668	950	1000	16	574	16	15	50	12.5	324	
1000	D160/20 - 40	1000	1106	750	630	6	547	1070	668	950	1000	16	574	16	15	50	12.5	321	
1000	DF160/LKE	1000	1106	750	630	6	547	1070	668	950	1000	16	574	16	15	50	12.5	330	
1000	W160/L	1000	1106	750	630	6	547	1070	668	950	1000	16	574	16	15	50	12.5	276	
1000	DF180/L/LM/LAN/LBN	1000	1106	800	630	6	547	1070	718	950	1000	16	574	16	15	50	12.5	420	
1000	D180/40	1000	1106	800	630	6	547	1070	718	950	1000	16	574	16	15	50	12.5	403	
1000	W180/L	1000	1106	800	630	6	547	1070	718	950	1000	16	574	16	15	50	12.5	407	
1000	D200/36 - 46	1000	1106	900	688	6	547	1070	818	950	1000	16	574	16	15	50	12.5	547	
1000	D200/51/57	1000	1106	900	688	6	547	1070	818	950	1000	16	574	16	15	50	12.5	582	
1000	W200/LF/LFR/LFG	1000	1106	900	688	6	547	1070	818	950	1000	16	574	16	15	50	12.5	520	
1000	W225/M/MF	1000	1106	950	688	6	547	1070	868	950	1000	16	574	16	15	50	12.5	613	
1120	DF132/M/MA/MS/MK/MSA/MSB	1120	1258	610	690	6	685	1190	468	1070	1120	14	710	20	15	50	16.5	267	282
1120	D132/18 - 26	1120	1258	610	690	6	685	1190	468	1070	1120	14	710	20	15	50	16.5	237	252
1120	W132/M	1120	1258	610	690	6	685	1190	468	1070	1120	14	710	20	15	50	16.5	236	203
1120	DF160/MA/MB/L/LM	1120	1258	750	690	6	685	1190	608	1070	1120	14	710	20	15	50	16.5	376	391
1120	D160/20 - 40	1120	1258	750	690	6	685	1190	608	1070	1120	14	710	20	15	50	16.5	372	387
1120	DF160/LKE	1120	1258	750	690	6	685	1190	608	1070	1120	14	710	20	15	50	16.5	381	396
1120	W160/L	1120	1258	750	690	6	685	1190	608	1070	1120	14	710	20	15	50	16.5	327	342
1120	DF180/L/LM/LAN/LBN	1120	1258	800	690	6	685	1190	658	1070	1120	14	710	20	15	50	16.5	445	460
1120	D180/40	1120	1258	800	690	6	685	1190	658	1070	1120	14	710	20	15	50	16.5	428	443
1120	W180/L	1120	1258	800	690	6	685	1190	658	1070	1120	14	710	20	15	50	16.5	432	447
1120	D200/36 - 46	1120	1258	900	748	6	685	1190	758	1070	1120	14	710	20	15	50	16.5	576	591
1120	D200/51/57	1120	1258	900	748	6	685	1190	758	1070	1120	14	710	20	15	50	16.5	611	626
1120	W200/LF/LFR/LFG	1120	1258	900	748	6	685	1190	758	1070	1120	14	710	20	15	50	16.5	549	564
1120	W225/M/MF	1120	1258	950	748	6	685	1190	808	1070	1120	14	710	20	15	50	16.5	643	658
1120	W250/M/MF	1120	1258	1050	748	6	685	1190	908	1070	1120	14	710	20	15	50	16.5	851	866

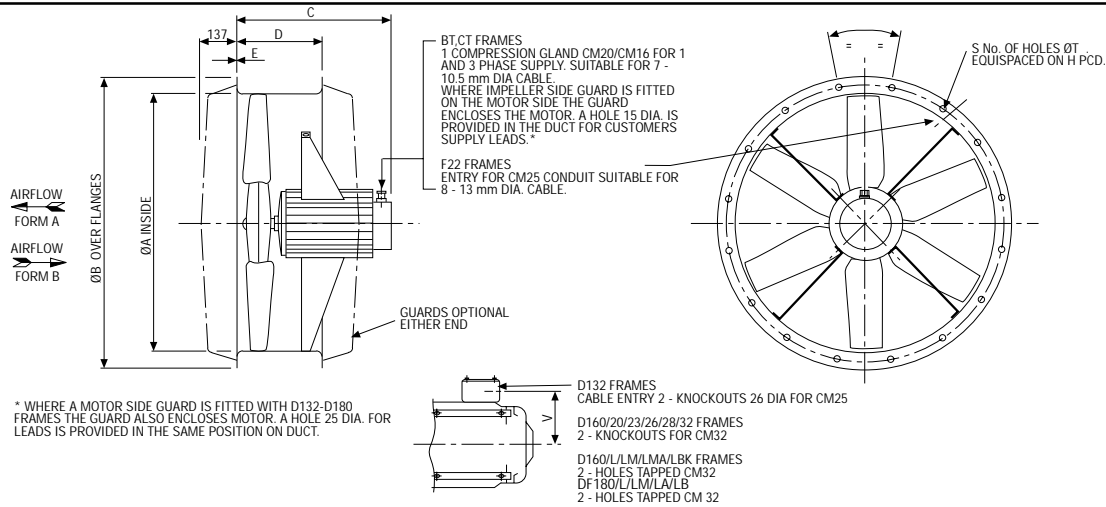
DIMENSIONS AND WEIGHTS

LONG CASED 1000-1600 DIA 400 & 500 HUB

Code	Motor Frame	DIMENSION REFERENCE (mm)															Fan Weight (kg) 400 Hub	Fan Weight (kg) 500 Hub	
		A	B	C	D	E	G	H	K	L	M	N	P	S	T	V	X (kg)		
1250	DF132/M/MA/MS/MK/MSA/MSB	1250	1388	610	755	6	750	1320	468	1150	1250	14	800	20	15	50	20.6	284	300
1250	D132/18 - 26	1250	1388	610	755	6	750	1320	468	1150	1250	14	800	20	15	50	20.6	254	270
1250	W132/M	1250	1388	610	755	6	750	1320	468	1150	1250	14	800	20	15	50	20.6	253	269
1250	DF160/MA/MB/L/LM	1250	1388	750	755	6	750	1320	608	1150	1250	14	800	20	15	50	20.6	398	413
1250	D160/20 - 40	1250	1388	750	755	6	750	1320	608	1150	1250	14	800	20	15	50	20.6	394	411
1250	DF160/LKE	1250	1388	750	755	6	750	1320	608	1150	1250	14	800	20	15	50	20.6	403	418
1250	W160/L	1250	1388	750	755	6	750	1320	608	1150	1250	14	800	20	15	50	20.6	349	364
1250	DF180/L/LM/LAN/LBN	1250	1388	800	755	6	750	1320	658	1150	1250	14	800	20	15	50	20.6	467	482
1250	D180/40	1250	1388	800	755	6	750	1320	658	1150	1250	14	800	20	15	50	20.6	450	465
1250	W180/L	1250	1388	800	755	6	750	1320	658	1150	1250	14	800	20	15	50	20.6	454	469
1250	D200/36/38/40/46	1250	1388	900	813	6	750	1320	758	1150	1250	14	800	20	15	50	20.6	603	617
1250	D200/51/57	1250	1388	900	813	6	750	1320	758	1150	1250	14	800	20	15	50	20.6	638	652
1250	W200/LF/LFR/LFG	1250	1388	900	813	6	750	1320	758	1150	1250	14	800	20	15	50	20.6	575	589
1250	W225/M/MF	1250	1388	950	813	6	750	1320	808	1150	1250	14	800	20	15	50	20.6	670	686
1250	W250/M/MF	1250	1388	1050	813	6	750	1320	908	1150	1250	14	800	20	15	50	20.6	879	896
1400	DF132/M/MA/MS/MSA/MSB	1400	1538	610	830	6	850	1470	468	1300	1400	14	900	20	15	50	34.3	319	338
1400	D132/18 - 26	1400	1538	610	830	6	850	1470	468	1300	1400	14	900	20	15	50	34.3	289	308
1400	W132/M	1400	1538	610	830	6	850	1470	468	1300	1400	14	900	20	15	50	34.3	288	307
1400	DF160/MA/MB/L/LM	1400	1538	750	830	6	850	1470	608	1300	1400	14	900	20	15	50	34.3	446	464
1400	D160/20 - 40	1400	1538	750	830	6	850	1470	608	1300	1400	14	900	20	15	50	34.3	442	460
1400	DF160/LKE	1400	1538	750	830	6	850	1470	608	1300	1400	14	900	20	15	50	34.3	451	469
1400	W160/L	1400	1538	750	830	6	850	1470	608	1300	1400	14	900	20	15	50	34.3	397	415
1400	DF180/L/LM/LAN/LBN	1400	1538	800	830	6	850	1470	658	1300	1400	14	900	20	15	50	34.3	516	534
1400	D180/40	1400	1538	800	830	6	850	1470	658	1300	1400	14	900	20	15	50	34.3	499	517
1400	W180/L	1400	1538	800	830	6	850	1470	658	1300	1400	14	900	20	15	50	34.3	503	521
1400	D200/36 - 46	1400	1538	900	888	6	850	1470	758	1300	1400	14	900	20	15	50	34.3	641	658
1400	D200/51/57	1400	1538	900	888	6	850	1470	758	1300	1400	14	900	20	15	50	34.3	676	693
1400	W200/LF/LFR/LFG	1400	1538	900	888	6	850	1470	758	1300	1400	14	900	20	15	50	34.3	550	567
1400	W225/M/MF	1400	1538	950	888	6	850	1470	808	1300	1400	14	900	20	15	50	34.3	711	730
1400	W250/M/MF	1400	1538	1050	888	6	850	1470	908	1300	1400	14	900	20	15	50	34.3	872	892
1600	DF132/M/MA/MS/MSA/MSB	1600	1760	610	930	6	950	1680	468	1500	1600	14	1000	24	20	50	40.7	354	374
1600	D132/18 - 26	1600	1760	610	930	6	950	1680	468	1500	1600	14	1000	24	20	50	40.7	324	344
1600	W132/M	1600	1760	610	930	6	950	1680	468	1500	1600	14	1000	24	20	50	40.7	323	343
1600	DF160/MA/MB/L/LM	1600	1760	750	930	6	950	1680	608	1500	1600	14	1000	24	20	50	40.7	472	490
1600	D160/20 - 40	1600	1760	750	930	6	950	1680	608	1500	1600	14	1000	24	20	50	40.7	468	486
1600	DF160/LKE	1600	1760	750	930	6	950	1680	608	1500	1600	14	1000	24	20	50	40.7	476	494
1600	W160/L	1600	1760	750	930	6	950	1680	608	1500	1600	14	1000	24	20	50	40.7	423	441
1600	DF180/L/LM/LAN/LBN	1600	1760	800	930	6	950	1680	658	1500	1600	14	1000	24	20	50	40.7	559	578
1600	D180/40	1600	1760	800	930	6	950	1680	658	1500	1600	14	1000	24	20	50	40.7	642	661
1600	W180/L	1600	1760	800	930	6	950	1680	658	1500	1600	14	1000	24	20	50	40.7	546	565
1600	D200/36/38/40/46	1600	1760	900	988	6	950	1680	758	1500	1600	14	1000	24	20	50	40.7	688	706
1600	D200/51/57	1600	1760	900	988	6	950	1680	758	1500	1600	14	1000	24	20	50	40.7	723	741
1600	W200/LF/LFR/LFG	1600	1760	900	988	6	950	1680	758	1500	1600	14	1000	24	20	50	40.7	660	678
1600	W225/M/MF	1600	1760	950	988	6	950	1680	808	1500	1600	14	1000	24	20	50	40.7	758	777
1600	W250/M/MF	1600	1760	1050	988	6	950	1680	908	1500	1600	14	1000	24	20	50	40.7	973	993

DIMENSIONS AND WEIGHTS

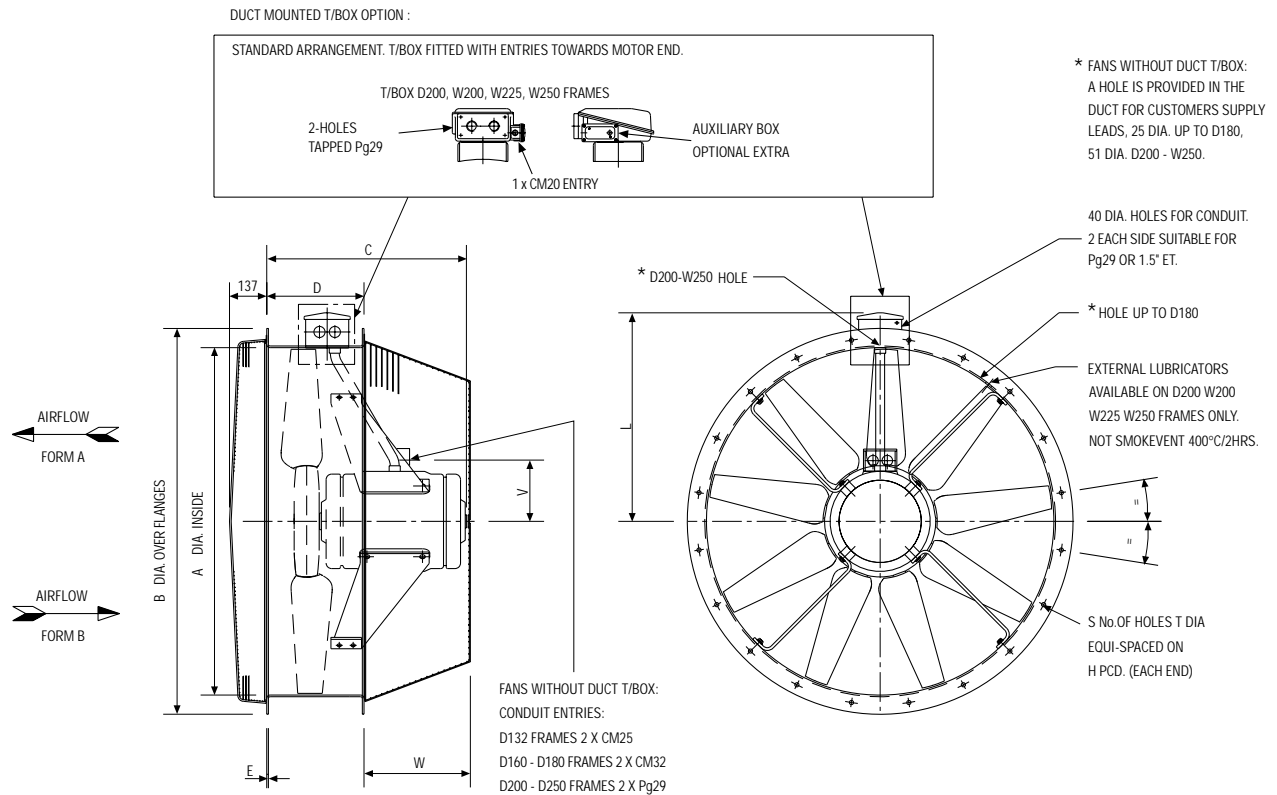
SHORT CASED 315 - 1000 DIA - UP TO 315 HUB



Code	Motor Frame	DIMENSION REFERENCE (mm)									Fan Weight (kg)
		A	B	C	D	E	H	S	T	V	
315	BT4/5	315	395	301	225	2.5	355	8	10	-	13.5
	BT9	315	395	333	225	2.5	355	8	10	-	15
	CT5	315	395	308	225	2.5	355	8	10	-	15.5
	CT9	315	395	348	225	2.5	355	8	10	-	20
355	BT4/5	355	435	301	225	2.5	395	8	10	-	14
	BT9	355	435	333	225	2.5	395	8	10	-	15.5
	CT5	355	435	308	225	2.5	395	8	10	-	16.5
	CT9	355	435	348	225	2.5	395	8	10	-	20.5
400	BT4/5	400	480	301	225	2.5	450	8	12	-	15
	BT9	400	480	333	225	2.5	450	8	12	-	16.5
	CT5	400	480	308	225	2.5	450	8	12	-	17
	CT9	400	480	348	225	2.5	450	8	12	-	21
450	BT4/5	450	530	301	225	2.5	500	8	12	-	17
	BT9	450	530	333	225	2.5	500	8	12	-	18.5
	CT5	450	530	308	225	2.5	500	8	12	-	19
	CT9	450	530	348	225	2.5	500	8	12	-	23
	F2225/45/65	450	530	404	225	3	500	8	12	-	33
	F2229/49/69	450	530	459	225	3	500	8	12	-	44
500	BT5	500	594	301	225	2.5	560	12	12	-	19
	BT9	500	594	333	225	2.5	560	12	12	-	20
	CT5	500	594	308	225	2.5	560	12	12	-	20.5
	CT9	500	594	348	225	2.5	560	12	12	-	25
	F2225/45/65	500	594	404	225	3	560	12	12	-	36
	F2229/49/69	500	594	459	225	3	560	12	12	-	47
560	BT5	560	654	301	225	2.5	620	12	12	-	20
	BT9	560	654	333	225	2.5	620	12	12	-	21.5
	CT5	560	654	308	225	2.5	620	12	12	-	22
	CT9	560	654	348	225	2.5	620	12	12	-	26
	F2225/45/65	560	654	404	225	3	620	12	12	-	38
	F2229/45/69	560	654	459	225	3	620	12	12	-	49
630	BT5	630	724	301	225	3	690	12	12	-	34
	BT9	630	724	333	225	3	690	12	12	-	35.5
	CT5	630	724	308	225	3	690	12	12	-	36
	CT9	630	724	348	225	3	690	12	12	-	40
	F2225/45/65	630	724	404	225	3	690	12	12	-	49
	F2229/49/69	630	724	459	225	3	690	12	12	-	60
	D132	630	724	445	260	4	690	12	12	160	94
	D160	630	724	575	260	4	690	12	12	200	172
	D180 *	630	724	656	350	6	690	12	12	243	287
710	CT5	710	804	308	225	3	770	16	12	-	38
	CT9	710	804	348	225	3	770	16	12	-	42
	F2225/45/65	710	804	404	225	3	770	16	12	-	52
	F2229/49/69	710	804	459	225	3	770	16	12	-	63
	D132	710	804	445	260	4	770	16	12	160	102
	D160 *	710	804	609	300	5	770	16	12	201	185
D180 *	710	804	665	350	6	770	16	12	243	287	
800	CT5	800	894	308	225	3	860	16	12	-	43
	CT9	800	894	348	225	3	860	16	12	-	47
	F2225/45/65	800	894	404	225	3	860	16	12	-	58
	F2229/49/69	800	894	459	225	3	860	16	12	-	58
	D132	800	894	445	260	4	860	16	12	160	132
	D160	800	894	575	260	4	860	16	12	200	189
D180 *	800	894	665	350	6	860	16	12	243	295	
900	F2225/45/65	900	1006	404	225	3	970	16	15	-	60
	F2229/49/69	900	1006	459	225	3	970	16	15	-	71
	D132	900	1006	445	300	5	970	16	15	160	138
	D160	900	1006	575	300	5	970	16	15	200	207
1000	F2225/45/65	1000	1106	404	225	3	1070	16	15	-	65
	F2229/49/69	1000	1106	459	225	3	1070	16	15	-	76
	D132	1000	1106	445	300	5	1070	16	15	160	146
	D160	1000	1106	575	300	5	1070	16	15	200	217
	D180 *	1000	1106	700	350	6	1070	16	15	243	350

DIMENSIONS AND WEIGHTS

SHORT CASED 1000-1600 DIA 400 & 500 HUB



Code	Motor Frame	DIMENSION REFERENCE (mm)											Fan Weight (kg) 400 Hub
		A	B	C	D	E	H	L	S	T	V	W	
1000	DF132/M/MA/MA/MSA/MSB/MK	1000	1106	558	350	5	1070	629	16	15	175	262	205
1000	D132/18 - 26	1000	1106	518	350	5	1070	629	16	15	158	262	173
1000	W132/M	1000	1106	520	350	5	1070	629	16	15	155	262	174
1000	DF160/MA/MB/L/LM/AK/BK	1000	1106	628	350	6	1070	630	16	15	219	372	292
1000	DF160/LKE	1000	1106	687	350	6	1070	630	16	15	219	372	298
1000	D160/18 - 38	1000	1106	625	350	6	1070	630	16	15	201	372	290
1000	D160/40	1000	1106	685	350	6	1070	630	16	15	201	372	295
1000	W160/L	1000	1106	626	350	6	1070	630	16	15	196	372	243
1000	DF180/L/LM	1000	1106	680	350	6	1070	630	16	15	243	372	348
1000	DF180/LAN/LBN	1000	1106	720	350	6	1070	630	16	15	243	427	364
1000	D180/29 - 35	1000	1106	718	350	6	1070	630	16	15	243	427	334
1000	D180/40	1000	1106	742	350	6	1070	630	16	15	243	427	347
1000	W180/L	1000	1106	682	350	6	1070	630	16	15	216	372	351
1000	D200/36 - 46	1000	1106	785	350	6	1070	688	16	15	263	527	458
1000	D200/51/57	1000	1106	856	350	6	1070	688	16	15	281	527	493
1000	W200/LF/LFR/LFG	1000	1106	835	350	6	1070	688	16	15	275	527	429
1000	W225/M/MF	1000	1106	878	350	6	1070	688	16	15	295	572	518
1000	W250/M/MF	1000	1106	992	350	6	1070	688	16	15	325	702	713
1120	DF132/M/MA/MS/MSA/MSB/MK	1120	1258	558	350	6	1190	690	20	15	175	262	220
1120	D132/18 - 26	1120	1258	518	350	6	1190	690	20	15	158	262	187
1120	W132/M	1120	1258	520	350	6	1190	690	20	15	155	262	188
1120	DF160/MA/MB/L/LM/AK/BK	1120	1258	628	350	6	1190	690	20	15	219	372	300
1120	DF160/LKE	1120	1258	687	350	6	1190	690	20	15	219	372	305
1120	D160/18 - 38	1120	1258	625	350	6	1190	690	20	15	201	372	295
1120	D160/40	1120	1258	685	350	6	1190	690	20	15	201	372	301
1120	W160/L	1120	1258	626	350	6	1190	690	20	15	196	372	251
1120	DF180/L/LM	1120	1258	680	350	6	1190	690	20	15	243	372	348
1120	DF180/LAN/LBN	1120	1258	720	350	6	1190	690	20	15	243	427	364
1120	D180/29 - 35	1120	1258	718	350	6	1190	690	20	15	243	427	351
1120	D180/40	1120	1258	742	350	6	1190	690	20	15	243	427	364
1120	W180/L	1120	1258	682	350	6	1190	690	20	15	216	372	353
1120	D200/36 - 46	1120	1258	785	350	6	1190	748	20	15	263	527	477
1120	D200/51/57	1120	1258	856	350	6	1190	748	20	15	281	527	511
1120	W200/LF/LFR/LFG	1120	1258	835	350	6	1190	748	20	15	275	527	447
1120	W225/M/MF	1120	1258	878	350	6	1190	748	20	15	295	572	537
1120	W250/M/MF	1120	1258	992	350	6	1190	748	20	15	325	702	728

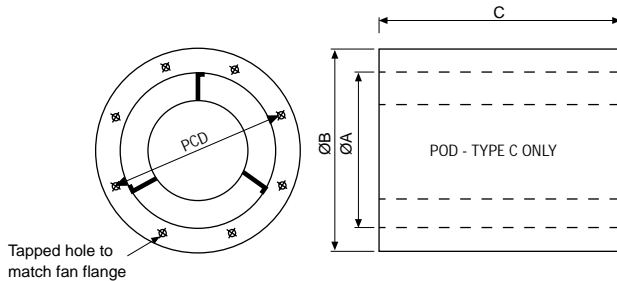
DIMENSIONS AND WEIGHTS

SHORT CASED 1000-1600 DIA 400 & 500 HUB

Code	Motor Frame	DIMENSION REFERENCE (mm)											Fan Weight (kg) 400 Hub	Fan Weight (kg) 500 Hub
		A	B	C	D	E	H	L	S	T	V	W		
1250	DF132/M/MA/MS/MK/MSA/MSB	1250	1388	558	350	6	1320	755	20	15	175	262	232	248
1250	D132/18 - 26	1250	1388	518	350	6	1320	755	20	15	158	262	200	216
1250	W132/M	1250	1388	520	350	6	1320	755	20	15	155	262	201	217
1250	DF160/MA/MB/L/LM/AK/BK	1250	1388	628	350	6	1320	755	20	15	219	372	312	327
1250	DF160/LKE	1250	1388	687	350	6	1320	755	20	15	219	372	317	332
1250	D160/18 - 38	1250	1388	625	350	6	1320	755	20	15	201	372	304	320
1250	D160/40	1250	1388	685	350	6	1320	755	20	15	201	372	309	326
1250	W160/L	1250	1388	626	350	6	1320	755	20	15	196	372	263	278
1250	DF180/L/LM	1250	1388	680	350	6	1320	755	20	15	243	372	365	380
1250	DF180/LAN/LBN	1250	1388	720	350	6	1320	755	20	15	243	427	381	396
1250	D180/29 - 35	1250	1388	718	350	6	1320	755	20	15	243	427	368	383
1250	D180/40	1250	1388	742	350	6	1320	755	20	15	243	427	381	396
1250	W180/L	1250	1388	682	350	6	1320	755	20	15	216	372	370	385
1250	D200/36 - 46	1250	1388	785	350	6	1320	813	20	15	263	527	491	505
1250	D200/51/57	1250	1388	856	350	6	1320	813	20	15	281	527	525	539
1250	W200/LF/LFR/LFG	1250	1388	835	350	6	1320	813	20	15	275	527	488	498
1250	W225/M/MF	1250	1388	878	350	6	1320	813	20	15	295	572	551	567
1250	W250/M/MF	1250	1388	992	350	6	1320	813	20	15	325	702	742	759
1400	DF132/M/MA/MS/MSA/MSB	1400	1538	558	350	6	1470	830	20	15	175	262	259	268
1400	D132/18 - 26	1400	1538	518	350	6	1470	830	20	15	158	262	227	236
1400	W132/M	1400	1538	520	350	6	1470	830	20	15	155	262	228	237
1400	DF160/MA/MB/L/LM/AK/BK	1400	1538	628	350	6	1470	830	20	15	219	372	342	350
1400	DF160/LKE	1400	1538	687	350	6	1470	830	20	15	219	372	347	355
1400	D160/18 - 38	1400	1538	625	350	6	1470	830	20	15	201	372	334	342
1400	D160/40	1400	1538	685	350	6	1470	830	20	15	201	372	340	348
1400	W160/L	1400	1538	626	350	6	1470	830	20	15	196	372	293	301
1400	DF180/L/LM	1400	1538	680	350	6	1470	830	20	15	243	372	389	401
1400	DF180/LAN/LBN	1400	1538	720	350	6	1470	830	20	15	243	427	404	413
1400	D180/29 - 35	1400	1538	718	350	6	1470	830	20	15	243	427	392	401
1400	D180/40	1400	1538	742	350	6	1470	830	20	15	243	427	405	413
1400	W180/L	1400	1538	682	350	6	1470	830	20	15	216	372	394	402
1400	D200/36 - 46	1400	1538	785	350	6	1470	888	20	15	263	527	515	524
1400	D200/51/57	1400	1538	856	350	6	1470	888	20	15	281	527	549	558
1400	W200/LF/LFR/LFG	1400	1538	835	350	6	1470	888	20	15	275	527	485	494
1400	W225/M/MF	1400	1538	878	350	6	1470	888	20	15	295	572	575	584
1400	W250/M/MF	1400	1538	992	350	6	1470	888	20	15	325	702	767	779
1600	DF132/M/MA/MS/MSA/MSB	1600	1760	558	350	6	1680	930	24	20	175	262	285	304
1600	D132/18 - 26	1600	1760	518	350	6	1680	930	24	20	158	262	253	272
1600	W132/M	1600	1760	520	350	6	1680	930	24	20	155	262	254	273
1600	DF160/MA/MB/L/LM/AK/BK	1600	1760	628	350	6	1680	930	24	20	219	372	365	383
1600	DF160/LKE	1600	1760	687	350	6	1680	930	24	20	219	372	370	388
1600	D160/18 - 38	1600	1760	625	350	6	1680	930	24	20	201	372	359	367
1600	D160/40	1600	1760	685	350	6	1680	930	24	20	201	372	364	372
1600	W160/L	1600	1760	626	350	6	1680	930	24	20	196	372	316	334
1600	DF180/L/LM	1600	1760	680	350	6	1680	930	24	20	243	372	412	432
1600	DF180/LAN/LBN	1600	1760	720	350	6	1680	930	24	20	243	427	428	447
1600	D180/29 - 35	1600	1760	718	350	6	1680	930	24	20	243	427	415	434
1600	D180/40	1600	1760	742	350	6	1680	930	24	20	243	427	428	447
1600	W180/L	1600	1760	682	350	6	1680	930	24	20	216	372	417	436
1600	D200/36 - 46	1600	1760	785	350	6	1680	988	24	20	263	527	544	562
1600	D200/51/57	1600	1760	856	350	6	1680	988	24	20	281	527	578	596
1600	W200/LF/LFR/LFG	1600	1760	835	350	6	1680	988	24	20	275	527	514	532
1600	W225/M/MF	1600	1760	878	350	6	1680	988	24	20	295	572	605	624
1600	W250/M/MF	1600	1760	992	350	6	1680	988	24	20	325	702	796	816

ANCILLARIES

SILENCER - B TYPE

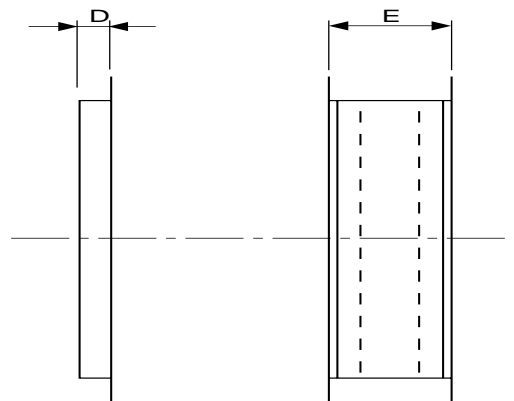


Suitable for fan ØA	B	C	Weight (kg)	
			B type	C type
315	415	315	10	13
355	455	355	12	15
400	500	400	15	18
450	600	450	20	24
500	650	500	25	29
560	710	560	30	35
630	780	630	35	42
710	860	710	44	53
800	1000	800	55	66
900	1100	900	70	84
1000	1200	1000	82	100
1120	1320	1120	100	118
1250	1450	1219	127	147
1400	1600	1400	193	220
1600	1800	1600	311	362

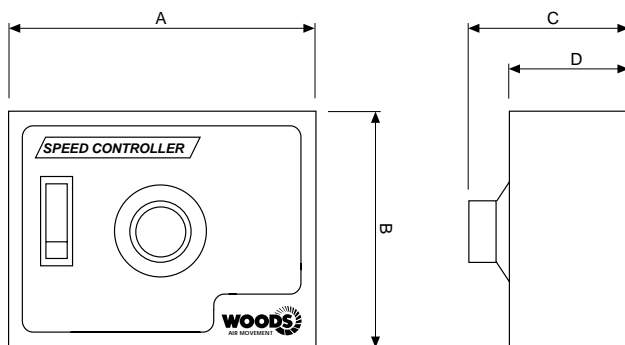
The above silencers give the approximate dB(A) reductions:-
 B Type 1 diameter length - 7 to 10 dB(A)
 C Type 1 diameter length - 12 to 15 dB(A)
 For full acoustic details contact our
 Woods Acoustic Division. Tel: +44 (0) 1206 544122

Suitable for fan ØA	D	E	F	G	Weight (kg)		
					Matching Flange	Flexible Connection	Damper
315	32	110	225	-	1.1	3.3	8
355	32	110	225	-	1.3	3.9	9
400	32	110	225	17	1.5	4.5	10
450	32	110	225	39	1.7	5.0	12
500	32	110	225	75	2.0	5.5	16
560	32	110	225	125	2.3	6.8	18
630	50	160	225	176	3.0	7.5	20
710	50	160	225	210	3.2	8.1	23
800	50	160	225	270	3.6	9.1	27
900	50	160	225	305	4.1	10.4	31
1000	50	160	225	345	4.6	11.6	36
1120	51	165	400	225	5.2	12.9	150
1250	51	165	400	290	5.8	14.4	166
1400	51	165	430	335	11.9	24.4	270
1600	51	165	435	435	14.8	30.3	300

MATCHING FLEXIBLE DAMPER FLANGE CONNECTION



SPEED CONTROLLER



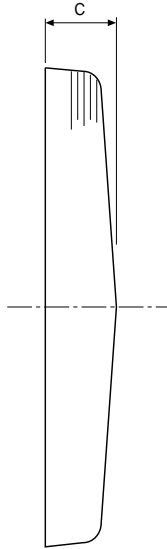
Type	A	B	C	D
ME1.1	104	83	55	40
ME1.3	148	87	62	47
ME1.6	148	87	62	47
MT1.1	124	124	60	52
MT1.5	160	270	196	161
MT1.8	160	270	196	161
MT3.0.5	160	270	196	161
MT3.1	160	270	196	161
MT3.2	160	270	196	161
ME3.2D	225	192	96	80
ME1.12	210	180	81	65
MT1.12	236	316	188	153

All dimensions in mm and kgs

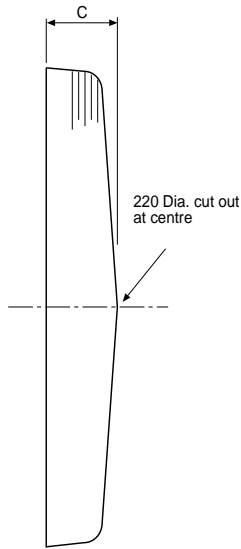
ANCILLARIES

GUARDS

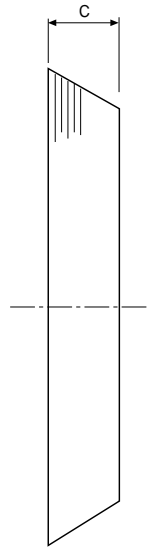
TYPE I
Impeller Side (all)
& Motor Side
(BT & CT)



TYPE II
Motor Side (S Type)
(F22)



TYPE III
Motor Side (S Type)
(D132 & above)

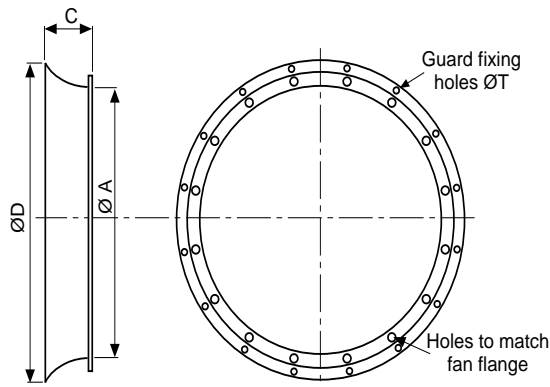


TYPE IV
Bellmouth &
Motor Side 'L'
type (all)



Suitable for fan ØA	Type	C (max.)	Weight kg (max.)
315	I	137	1.2
315	IV	30	0.5
355	I	137	1.4
355	IV	30	0.5
400	I	137	1.6
400	IV	30	0.6
450	I	137	1.8
450	II	137	1.6
450	IV	30	0.6
500	I	137	2.0
500	II	137	1.8
500	IV	30	0.7
560	I	137	2.2
560	II	137	2.0
560	IV	50	1.0
630	I	137	2.8
630	II	137	2.6
630	III	350	3.0
630	IV	50	1.2
710	I	137	3.2
710	II	137	3.0
710	III	350	3.4
710	IV	50	1.4
800	I	137	3.5
800	II	137	3.3
800	III	350	3.9
800	IV	50	1.5
900	I	137	4.2
900	II	137	4.2
900	III	310	4.8
900	IV	50	1.7
1000	I	137	5.0
1000	II	137	4.8
1000	III	310	5.6
1000	IV	50	2.0
1120	I	137	7.1
1120	III	572	11.8
1120	IV	50	6.9
1250	I	137	6.4
1250	III	572	12.0
1250	IV	50	6.4
1400	I	137	8.0
1400	III	572	13.5
1400	IV	50	7.1
1600	I	137	9.0
1600	III	702	18.9
1600	IV	50	8.8

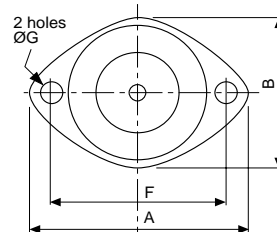
BELLMOUTH



Suitable for fan ØA	C	D	Weight (kg)
315	65	379	1.0
355	85	423	1.2
400	80	480	1.5
450	95	536	2.0
500	87	600	3.2
560	100	668	4.0
630	108	757	4.8
710	126	857	5.4
800	134	957	6.8
900	150	1077	8.0
1000	167	1199	17.8
1120	188	1349	19.9
1250	210	1504	25.0
1400	250	1680	31.0
1600	260	1906	46.0

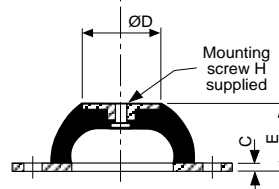
VIBRATION ISOLATORS

Type	Load range per mounting (kg)	A	B	C	D	E	F	G	H
M7 Green	0-3	64	43	2	15	20	50	7	M6
M7 Black	3-5	64	43	2	15	20	50	7	M6
M25 Green	5-20	85	56	2	30	25	66	8	M8
M25 Black	19-40	85	56	2	30	25	66	8	M8
M200 Green	38-130	151	101	3	55	45	124	11.5	M10
M200 Black	90-220	151	101	3	55	45	124	11.5	M10



For larger vibration isolators, please enquire

All dimensions in mm and kgs





USEFUL INFORMATION

FAN LAWS

SPEED CHANGE - CONSTANT SIZE - CONSTANT DENSITY

Volume Flow	Rotational Speed
Pressure (Static, Dynamic and Total)	(Rotational Speed) ²
Power Absorbed	(Rotational Speed) ³

SIZE CHANGE - CONSTANT SPEED - CONSTANT DENSITY

(For geometrically similar fans only)

Volume Flow	(Impeller Diameter) ³
Pressure (Static, Dynamic and Total)	(Impeller Diameter) ²
Power Absorbed	(Impeller Diameter) ⁵

DENSITY CHANGE - CONSTANT SPEED - CONSTANT SIZE

Volume Flow	=	No change
Pressure (Static, Dynamic and Total)		Density
Power Absorbed		Density

The laws can be combined where simultaneous changes in size, speed and density are required.

AIR DENSITY

Standard Air density is 1.2 kg/m³

One condition that gives Standard Air is:-

16°C, 100 kPa barometric pressure, 65% relative humidity

CHANGE DUE TO TEMPERATURE

$$\text{New Density} = \text{Old Density} \times \left(\frac{273 + \text{Old Temperature } ^\circ\text{C}}{273 + \text{New Temperature } ^\circ\text{C}} \right) \text{ kg/m}^3$$

CHANGE DUE TO ALTITUDE

$$\text{New Density} = \text{Old Density} \times \left(\frac{288 - 0.00649 H}{288} \right)^{4.256} \text{ kg/m}^3$$

Where H = Height above sea level in metres

PRESSURE

$$\text{Dynamic Pressure} = 0.5 (V)^2 \text{ Pa}$$

$$\begin{aligned} \text{Where } \rho &= \text{Air Density } \text{ kg/m}^3 \\ V &= \text{Air Velocity } \text{ m/s} \end{aligned}$$

$$\text{Total Pressure} = \text{Static Pressure} + \text{Dynamic Pressure}$$

ABSORBED POWER

$$\text{Absorbed Power} = \frac{\text{Volume flow (m}^3\text{/s)} \times \text{Total Pressure (Pa)}}{\text{Total Efficiency} \times 10} \text{ kW}$$

Woods Air Movement Limited is represented in over 70 countries world-wide.
These are listed on our Website - www.woods-fans.com

U.K.

England

South & South East

Woods Air Movement Limited
Tufnell Way
Colchester CO4 5AR
Telephone: +44 (0)1206 544122
Facsimile: +44 (0)1206 574434
E-mail: enquiry@woods-fans.com

Wales, Midlands

& South West England

Woods Air Movement Limited
Waterlinks House, Richard Street
Birmingham B7 4AA
Telephone: +44 (0)121 359 6633
Facsimile: +44 (0)121 359 1818
E-mail: birmingham@woods-fans.com

Scotland &

North of England

Woods Air Movement Limited
First Floor, Entrance 6, Crossford Court
Dane Road, Sale, Cheshire, M33 7BZ
Telephone: +44 (0)161 969 1992
Facsimile: +44 (0)161 969 4612
E-mail: manchester@woods-fans.com

Europe

Finland

Woods Puhallin Oy
Ruosilantie 2b
00390 Helsinki
Finland
Telephone: +35 8 9 540 4770
Facsimile: +35 8 9 540 47754
E-mail: info@woods-puhallin.fi

France

Cie Française Woods
16 Burospace
F91572 Bievres Cedex
France
Telephone: +33 1 6019 5594
Facsimile: +33 1 6019 5571
E-mail: woodsfr@gec-france.fr

Germany

Woods Ventilatoren GmbH
Siemensstrasse 16
40 885 Ratingen
Germany
Telephone: +49 21 02 31068
Facsimile: +49 21 02 39113
E-mail: woods@t-online.de

Italy

Woods Italiana SpA
Via Montenero 55/57
20092 Cinisello Balsamo
Milan, Italy
Telephone: +39 02 61 86091
Facsimile: +39 02 61 860947
E-mail: info@woods-italiana.it

International

Canada

Woods Air Movement (Canada) Limited
401 Traders Blvd
Unit #8, Mississauga
Ontario L4Z 2H8 Canada
Telephone: +1 905 501 0211
Facsimile: +1 905 501 0399
E-mail: sales@woodsfanscanada.com

Singapore

Woods Singapore Pte
Marconi Building
3 Tai Seng Drive
Singapore 535216
Telephone: +65 382 1889
Facsimile: +65 382 1339
E-mail: sales@woods.com.sg

USA

American Fan Company
2933 Symmes Road
Fairfield
Ohio 45014, USA
Telephone: +1 513 874 2400
Facsimile: +1 513 870 6249
E-mail: af-sales@amfan-woods.com

Due to a policy of continuous development and improvement the right is reserved to supply products which may differ from those illustrated and described in this publication. Certified dimensions will be supplied on request on receipt of order.